

**B'nai Tikvoh-Sholom  
& The Neshama Center for Lifelong Learning  
January 2024 Tevet/Shevat 5784**



**Lunch and Learn: *"Released for Publication:  
Israeli Poems in the Wake of October 7th"*—2**  
**Children's Reading Partners Training Session—2**  
**Cellphone Booster—2**  
**Hanukkah Madness Photos—3**  
**JCC Hanukkah Brunch & Learn Photos—3**  
**Friends of Yiddish—4**  
**Tangling with Talmud—4**  
**Sisterhood Book Discussion: *Soles of A Survivor*—4**  
**Quill and Chill—4**  
**Weekly Services—5**  
**Tu B'Shevat Oneg—5**  
**Birthday Shabbat—5**  
**Member News—6**  
**Donations—6**  
**Calendar—7**



**“Released for Publication:  
Israeli Poems in the Wake of October 7th”**

**Saturday, January 27th at 11:30 am at BTS**

(following services which begin at 10:00 am)

**Led by Rabbi Debra Cantor and Ronny Siegel**

The horrific events of October 7th and the war that has followed have given rise to a daily outpouring of artistic expression, including poetry. Join us as we explore these new poems, in Hebrew and in English translation.

This event is free and open to all; donations to the Katten Fund (before or after Shabbat, if possible), are welcome.

Please register in advance by January 23rd. Note that although our services are both in-person and on Zoom, **the Lunch and Learn will be in-person only.**

If you plan to attend the Lunch and Learn, register at <https://lp.constantcontactpages.com/sl/dCxz8Rd/BTSLunchandLearn0124> to insure that there's enough lunch with your learning.



**Children's Reading Partners Training Session**

**Tuesday, January 16 | 5:30 - 7:30 p.m.**

**Community Services Building  
333 Bloomfield Avenue | West Hartford**

*In case of inclement weather, registrants will be sent a Zoom link.*

**Help at-risk students improve their reading skills**  
Attend a training session, then select a 30-minute-per-week time slot to read to a K-5th grade student during the school day or after-school hours.



**Register by January 14th at  
[READ@jewishhartford.org](mailto:READ@jewishhartford.org).**

For questions, please email [READ@jewishhartford.org](mailto:READ@jewishhartford.org) or call (860) 236-7323 (READ).



Children's Reading Partners  
Empowering children through literacy



**Jewish Federation**  
of Greater Hartford

**Thank You**

Dear BTS Family,  
Thank you for all the sympathy and support on the loss of my beloved sister, Eugenia “Jean” McGee. I will always miss her! Your love, donations and visits mean more to me than you will ever know.  
♥ Maria daCunha and family



**The Office will be closed on  
Monday, January 1st and  
Monday, January 15th.**

The cover photo of snow, ice and pine needles is courtesy of Nancy Lichtenberg, of Jewish Family Services of Greater Hartford. The photo above of a tree on a wintry day is courtesy of Janna Gross.

**New Cell Phone Booster at BTS**



Thanks to the efforts of Larry Rosenberg, BTS recently installed a cell phone booster, which is designed to improve weak cell signals and reduce dropped calls in the synagogue, regardless of your carrier. While it can't be perfect because of the peculiar geography around Bloomfield, many members have noticed an improvement when using their phones.

There's no need to change any settings on your cell phone. You should now be better able to make and receive cell phone calls and texts while at synagogue!

If you've noticed improved reception, please contact Larry Rosenberg at [larryrosenberg@transoncaol.com](mailto:larryrosenberg@transoncaol.com) and let him know.





## Hanukkah Madness!

### With many thanks to:

Janna Gross and Dale Osborn for food prep and setup  
 Steve Motley for setup and cleanup and bravely setting off the fireworks  
 Rabbi Cantor and Jim Beede for making their annual trip to New Hampshire to purchase the fireworks and donating them  
 Ellen Leonard for entertaining us with holiday songs on her flute  
 Greg Matthaey and Larry Rosenberg for taking photos and Greg for helping with setup



## JCC Hanukkah Brunch and Learn

The JCC Brunch & Learn program led by Rabbi Cantor entitled 'Seeking Light in the Darkness: A Hands-On Participatory Workshop,' was attended by many BTS members



## Friends of Yiddish

**Sunday, January 14th at 10:30 am on Zoom**

Friends of Yiddish is an informal, mostly English bilingual drop-in social group which meets to hear a guest speaker or discussion & maybe absorb a Yiddish word or two. For more information, contact Barbara Katzman at 860-666-6751 or [barbaralenore@yahoo.com](mailto:barbaralenore@yahoo.com). You only need to register once for Friends of Yiddish online.

<https://bit.ly/BTS-Friends-of-Yiddish>



## Tangling with Talmud

**Wednesday, January 3rd, 17th, 24th and 31st on Zoom**

The Talmud is a rich and lively conversation among many generations. Passionate arguments about law and justice are intertwined with wild stories and musings about the meaning of life. Come participate and add your own voice.

No experience needed. You only need to register once for Tangling With Talmud online.

[https://bit.ly/BTS\\_Tangling\\_With\\_Talmud](https://bit.ly/BTS_Tangling_With_Talmud)

## Quill and Chill

**Sunday, January 7th at 2:00 pm at BTS** (previously scheduled for December 3rd)

Snow date: January 14th

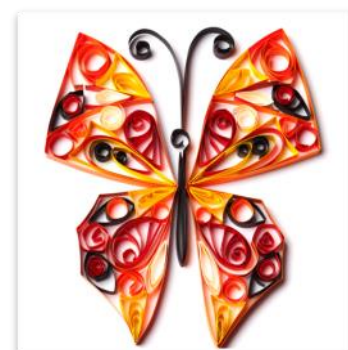
**Led by Shari J. Cantor**

Join Sisterhood to engage in the ancient craft of paper quilling to make a Tu B'Shevat decoration for your home. All it takes is rolling, folding and gluing. No experience needed.

Refreshments will be served.

Please RSVP to Shari J. Cantor at [betorah@aol.com](mailto:betorah@aol.com) by Wednesday, January 3rd.

*Donations are encouraged and can be made at the event.*



## Sisterhood Book Discussion: Soles of A Survivor by Nhi Aronheim

**Sunday, February 11th at 3:00 pm on Zoom**

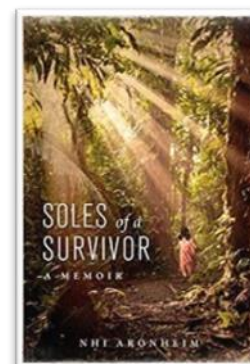
The soles of Nhi Aronheim's feet still bear the scars of her escape from Vietnam—trudging through the jungles of Cambodia as a twelve-year-old with a group of strangers seeking the land of opportunity: America. Her quest for survival through the Cambodian jungle eventually led her to a boat that took her to Thailand and an orphanage where Nhi lived for two years until she qualified for refugee status in the United States. Years later, she returned to Vietnam with a film producer to reunite with the family she never thought she'd see again. A second trip to Vietnam brought her two mothers, birth and adopted, face to face.

Yet *Soles of a Survivor* isn't just another inspirational survival story. It's about the lessons Nhi learned about humanity, diversity, and unconditional love since arriving in the United States. She now has a deeper appreciation for the parallels between the Jewish and Vietnamese cultures, and others. After she met her Jewish beau, they got married. She eventually converted to Judaism, though the process was challenging for an Asian woman adopted into a Christian household. Her story shows it matters less what religion we're part of, as long as we radiate goodness to those we meet.

Now she relishes being a Vietnamese Jew.

Join Shari J. Cantor for a discussion about this "powerful, uplifting memoir" a "beacon of light for dark and trying times."

You only need to register once for Sisterhood book discussions online. [https://bit.ly/BTS\\_Sisterhood\\_Book\\_Group](https://bit.ly/BTS_Sisterhood_Book_Group)





## Weeknight Minyan

### Wednesday nights at 7:00 pm on Zoom

Join us for a brief service to *daven* and say *Kaddish*.

Register for Weekly Minyan online. [https://bit.ly/BTS\\_WednesdayMinyan](https://bit.ly/BTS_WednesdayMinyan)

*Shabbat services have returned to the chapel, with a hybrid option for those who prefer to remain at home. Please join us in person or online. We look forward to worshipping with you.*

## Welcome Shabbat

### Fridays at 7:00 pm at BTS

Join us as we make the transition from the workweek into Shabbat. We'll sing some Shabbat melodies, share words of Torah, recite a prayer for healing and Mourner's *Kaddish*, and then make *kiddush*.

Register for Welcome Shabbat Services online. [https://bit.ly/BTS\\_Welcome\\_Shabbat](https://bit.ly/BTS_Welcome_Shabbat)

## Shabbat Morning Services and Deep Dive

### Saturdays at 10:00 am at BTS

We'll celebrate Shabbat with services, Torah reading and a deep dive into the text.

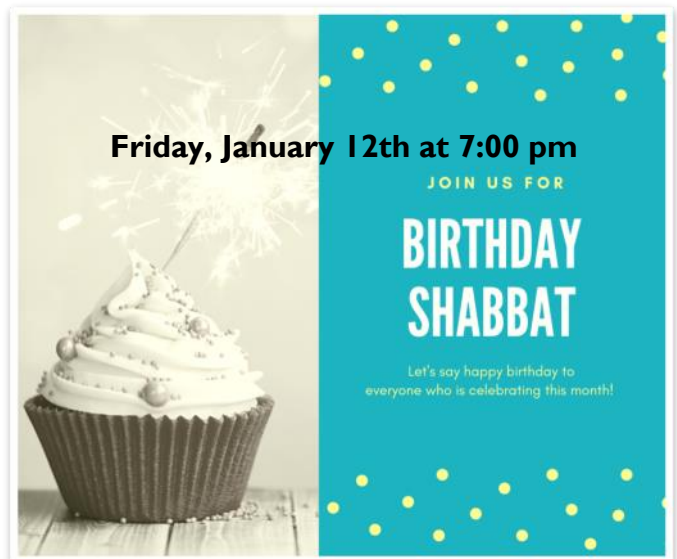
Register for Shabbat Morning Services online. [https://bit.ly/BTS\\_ShabbatDeepDive](https://bit.ly/BTS_ShabbatDeepDive)



## Tu B'Shevat Oneg

**Friday, January 19th at BTS,  
following Welcome Shabbat Services at 7:00 pm**

Join us for the annual Tu B'Shevat Oneg, sponsored by Ellen Leonard and Greg Matthaey. Come in from the cold to celebrate Shabbat and Tu B'Shevat.



## Mazal Tov to:

Shari G. Cantor and Deb Polun, both of whom were re-elected to the West Hartford Town Council. Shari will once again serve as Mayor. Michael Cantor, who was honored by the UCONN Law School Alumni Association with the Distinguished Graduate Award. Shirley and Robert Gerrol, on their 65<sup>th</sup> anniversary on December 21st. Cindy Maher, who will be playing Erma Bombeck in a one-woman show, "At Wit's End" with the Farmington Valley Stage Company in Collinsville, from January 19th-21st. Fillis and John Stober, on their 53rd anniversary on January 3rd.

## Refuah Sheleymah to:

Phyllis Berman, Ruth Brainin, Bob Gerrol, Lynn Kaplan-Goldberg, Leon Goldsmith, Barbara Hirsch, Greg Matthaey, Esther Multer, Al Oppenheimer, Rabbi Marshal Press, Elayne Ringler, Marty Shinder, Barbara Siskin, Marc Siskin, Marion Warner

## Good News

Got good news to share? We want to hear it. To share good news with your friends at BTS, contact Rabbi Debra Cantor at [cantordebra@gmail.com](mailto:cantordebra@gmail.com) or 860-463-0986 or Dale Osborn at [daleoz@att.net](mailto:daleoz@att.net) or 860-508-7261.

## Donations as of December 15th

### GENERAL FUND

Marian Adler, in honor of the yahrzeit of her mother-in-law, Clara Adler  
Marian Adler, in honor of the yahrzeit of her father-in-law, Daniel Adler  
Marian Adler, in honor of the yahrzeit of her father, Abraham C. Sadick  
Karen Freilich, in honor her friend, Paula Cohen-Clemente's birthday  
Karen Freilich, in honor of the yahrzeit of her friend, Paula Cohen-Clemente  
Judy Hauth, in honor of the yahrzeit of her father, Harry M. Krantzman  
Judith Moskowitz  
Nancy Rossi, to thank Rabbi Cantor for her solemn, compassionate words at this dark time and for words of light at JSP workshop  
John & Andrea Tannenbaum, in honor of Rabbi Cantor and all those who planned and participated in the Holiday Services

### RABBI'S DISCRETIONARY FUND

Ruth Brainin, in honor of the yahrzeit of Harold Brainin  
Barbara Katzman, in appreciation of BTS and Rabbi Cantor for the Hanukkah program and all the Rabbi does for the synagogue  
Ona & Tom Mastronarde

### BUILDING FUND

Barbara Katzman, in appreciation of Barry Goldberg & Lynn Kaplan-Goldberg for their kindness  
Barbara Katzman, in appreciation of Ellen Leonard for her assistance and kindness  
Barbara Katzman, in appreciation of Larry Rosenberg for his assistance with Friends of Yiddish  
Steven Warner, condolences to Maria daCunha & family on the passing of her sister, Eugenia "Jean" McGee

### MEIER AND RAHEL KATTEN MEMORIAL FUND

Bernice Matty, in honor of Donna Divine, and in appreciation of her presentation on Israel at war

### MALCOLM M. SNYDER MEMORIAL FUND

Elizabeth Zelek



# January 2024

Sun

Mon

Tue

Wed

Thu

Fri

Sat

	<b>1 20 Tevet</b> <b>Office Closed</b>	<b>2 21 Tevet</b> 4:00 Calendar Meeting on Zoom	<b>3 22 Tevet</b> 10:30 Tangling with Talmud on Zoom 7:00 Minyan	<b>4 23 Tevet</b>	<b>5 24 Tevet</b> 4:15 Candle Lighting 7:00 Welcome Shabbat Services	<b>6 25 Tevet</b> <i>Shemot</i> 10:00 Shabbat Morning Services and Deep Dive
<b>7 26 Tevet</b> 2:00 Quill and Chill at BTS	<b>8 27 Tevet</b> 7:00 Board of Directors Meeting	<b>9 28 Tevet</b>	<b>10 29 Tevet</b> <b>No Tangling With Talmud</b> 7:00 Minyan	<b>11 1 Shevat</b> <b>Rosh Hodesh Shevat</b>	<b>12 2 Shevat</b> 4:23 Candle Lighting 7:00 Welcome Shabbat Services/ <b>Birthday Shabbat</b> 	<b>13 3 Shevat</b> <i>Vaera</i> 10:00 Shabbat Morning Services and Deep Dive
<b>14 4 Shevat</b> 10:30 Friends of Yiddish on Zoom (2:00 Quill and Chill at BTS-- Snow Date)	<b>15 5 Shevat</b> <b>Martin Luther King, Jr. Day</b> <b>Office Closed</b>	<b>16 6 Shevat</b> 5:30-7:30 Children's Reading Partner's Training Session at the Community Services Building	<b>17 7 Shevat</b> 10:30 Tangling with Talmud on Zoom 7:00 Minyan	<b>18 8 Shevat</b> <b>Bulletin Deadline</b>	<b>19 9 Shevat</b> 4:31 Candle Lighting 7:00 Welcome Shabbat Services & <b>Tu B'Shevat Oneg</b>	<b>20 10 Shevat</b> <i>Bo</i> 10:00 Shabbat Morning Services and Deep Dive
<b>21 11 Shevat</b>	<b>22 12 Shevat</b>	<b>23 13 Shevat</b>	<b>24 14 Shevat</b> <b>Tu B'Shevat</b> 10:30 Tangling with Talmud on Zoom 7:00 Minyan	<b>25 15 Shevat</b>	<b>26 16 Shevat</b> 4:39 Candle Lighting 7:00 Welcome Shabbat Services	<b>27 17 Shevat</b> <i>Shirah</i> 10:00 Shabbat Morning Services <b>11:30 Lunch &amp; Learn</b> <i>"Released for Publication: Israeli Poems in the Wake of October 7th"</i>
<b>28 18 Shevat</b>	<b>29 19 Shevat</b>	<b>30 20 Shevat</b>	<b>31 21 Shevat</b> 10:30 Tangling with Talmud on Zoom 7:00 Minyan			



# Tu B'Shevat

CELEBRATING THE NEW YEAR



Dr. Madhavi Chavda, DMD

780 Farmington Avenue  
West Hartford, CT 06119

(860) 232-6865  
office@talcottdentalcare.com  
www.talcottdentalcare.com

Since 1898  
HEBREW FUNERAL ASSOCIATION, Inc.

חסד של אמת

Leonard J. Holtz, Executive Funeral Director  
Second generation serving Greater Hartford  
A Traditional Way For All Jews

Tel. (860) 224-2337  
Tel. (860) 586-8244  
Call (860) 888-6919  
906 Farmington Ave. West Hartford, CT 06119  
P.O. Box 370302, West Hartford, CT 06137  
FDIC Pre-Paid Funeral Trusts with Cooperative Funeral Fund, Inc.

## Renée G. Schwartz

LL.M. IN ELDER LAW AND ESTATE PLANNING  
ADMITTED IN CONNECTICUT AND NEW YORK

Renee@familytrustmatters.com

CONNECTICUT  
OFFICE

34 Jerome Ave, Ste. 120  
Bloomfield, CT 06002  
P (860) 997-5562  
F (888) 401-4789

WESTCHESTER  
OFFICE

215 Katonah Avenue  
Katonah, NY 10536  
P (914) 362-1220  
F (888) 401-4789

Congregation B'nai Shalom Cemetery, Inc  
Located at Jordan Lane Extension, Wethersfield, CT



PO Box 310968  
Newington, Connecticut 06131

(860) 666-6992  
(860) 559-7138

info@CBSCEmemetery.org  
www.CBSCEmemetery.org

Located at Jordan Lane Extension, Wethersfield CT.  
A Bucolic Memorial Park

Our Family Serving Your Family  
For Over 78 Years...

Dignifying Halachic Tradition  
and Ritual Practice

Compassion and understanding regarding  
pre-need counseling and pre-paid funeral trusts

**WEINSTEIN**  
Mortuary

640 FARMINGTON AVENUE, HARTFORD, CONNECTICUT 06105  
PHONE: 860.233.2675 \* FAX: 860.233.2680  
TOLL FREE: 877.233.2680 \* www.weinsteinmortuary.com

Email: [weinsteinmortuary@comcast.net](mailto:weinsteinmortuary@comcast.net)



## Hedges and Hedges LTD

Print ▲ Mail ▲ Graphics

1155 Silas Deane Highway, Wethersfield, CT 06109

Tel 860.257.3170 Fax. 860.257.3166

[tom@hedgesandhedgesltd.com](mailto:tom@hedgesandhedgesltd.com)

Bernheimer  
Lincoln  
Insurance  
Group, Inc.

Bruce Bernheimer, CPCU

779 Farmington Ave. Phone: (860) 232-3810  
West Hartford, CT 06119 Fax: (860) 232-3942  
[bruce@bernheimerinsurance.com](mailto:bruce@bernheimerinsurance.com)

da Cunha's  
WOODWORKS, LLC

RESIDENTIAL & COMMERCIAL - STOCK, CUSTOM & HAND BUILT  
KITCHEN AND BATH CABINETS, MILLWORK & BEYOND

TOM DACUNHA  
45 NOBLE STREET  
NEW BRITAIN, CT 06051

PH: 860-529-3889 OR 860-505-7992  
FAX: 860-529-3880  
DACUNHASWOODWORKS@SBCGLOBAL.NET

@DACUNHASWOODWORKSLLC  
FAMILY-OWNED BUSINESS FOR OVER 35 YEARS!



# B'nai Tikvoh-Sholom Donation Form

(Revised 11/1/2020)

Donation From: Name \_\_\_\_\_ Telephone # \_\_\_\_\_

Donation For: \_\_\_\_\_

Fund: \_\_\_\_\_

Minimum Donation for General Fund or Specific Fund is \$10 each or for other—see listed below:

If applicable, acknowledge to: \_\_\_\_\_

Please check other donation you wish to order and attach with specific instructions for:

- |  |  |
|--|--|
| <input type="checkbox"/> Chumash, Machzor Bookplate \$35 | <input type="checkbox"/> Prayer Bookplate \$25       |
| <input type="checkbox"/> Memorial Plaque \$300           | <input type="checkbox"/> Sanctuary Seat Plaque \$350 |

Foyer Tree of Life:  Gold \$360  Silver \$250  Bronze \$125  Stone \$1,500 Hallway Tree of Life:  Gold \$125

Provide additional information if necessary: \_\_\_\_\_

## Sol Ackerman Fund

To provide support for the Kiddush/Ritual Fund

## Beautification Fund

To further enhance the beauty of the synagogue

## Justin Bernheimer Award

For a Congregational Service Award

## Cantor Wilfred Birnbaum Fund for Religious Enhancement

## Building Fund

To offset the costs of operating the building

## Education Fund

To fund Lifelong Learning

## General Fund

To support the operation of the synagogue

## Bob Guggenheim Memorial Fund

To support the operation of the synagogue

## Meier and Rahel Katten Memorial Fund

To support Lunch and Learn programs

## Kiddush/Ritual Fund

To provide food for Shabbat and Holidays

## Mandell Israel Program Fund

To subsidize teen trips to Israel

## Phyllis Margolin Memorial Music Education

To fund music programs

## Neshama Center For Lifelong Learning Fund

To support the Neshama Center for Lifelong Learning

## Rabbi's Discretionary Fund

To be used at the Rabbi's discretion

## Alyssa Suzanne Roy Memorial Fund

To provide gifts to *bar* and *bat mitzvah* students

## Ilse & Manfred Stein Memorial Fund

## Malcolm M. Snyder Memorial Fund

To support the operation of the synagogue

## Torah Fund

To maintain integrity of the Torahs

## Youth Fund

To subsidize attendance at youth events

### Rabbi Debra Cantor

[cantordebra@gmail.com](mailto:cantordebra@gmail.com) 860-463-0986

President: Dale Osborn

[daleoz@att.net](mailto:daleoz@att.net) 860-508-7621

Office/Business Manager: Maria daCunha

[mdacunha@btsonline.org](mailto:mdacunha@btsonline.org) 860-243-3576

### B'nai Tikvoh-Sholom

180 Still Road Bloomfield, CT 06002

860-243-3576 FAX—860-243-9601

[office@btsonline.org](mailto:office@btsonline.org) [www.btsonline.org](http://www.btsonline.org)

Bulletin Editor: Shari J. Cantor

### RABBI'S OFFICE HOURS:

The rabbi is happy to communicate with you via email, text and telephone or in person. Feel free to contact her.

### OFFICE HOURS:

Monday, Tuesday, and Thursday from 10:00 am to 3:00 pm.

Mail and items placed in the drop box will be picked up.